



**Sheridan Court, Vickers Way, Hounslow, TW4 5EE**

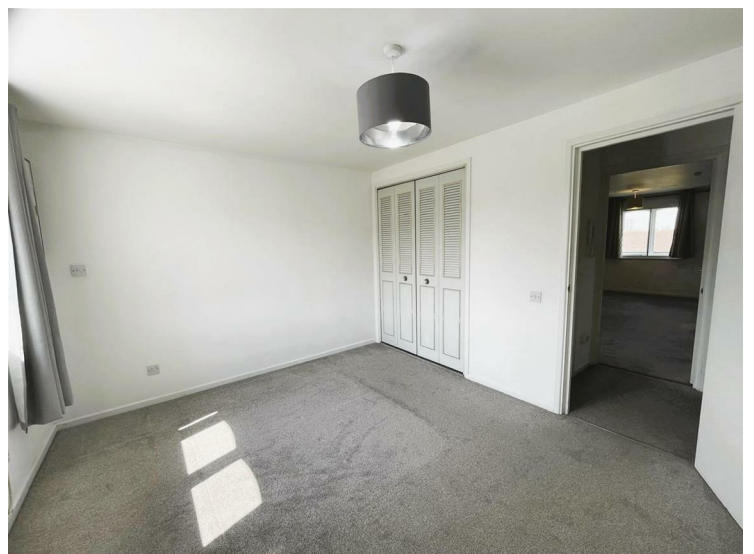
**£195,000**

A well presented one bedroom purpose built second floor flat situated in this popular Hounslow Heath development with access to local shops, schools and transport links. The accommodation comprises lounge, modern kitchen, bedroom and modern bathroom. The property benefits from electric heating, allocated parking, communal gardens and Lease of approximately 176 years.

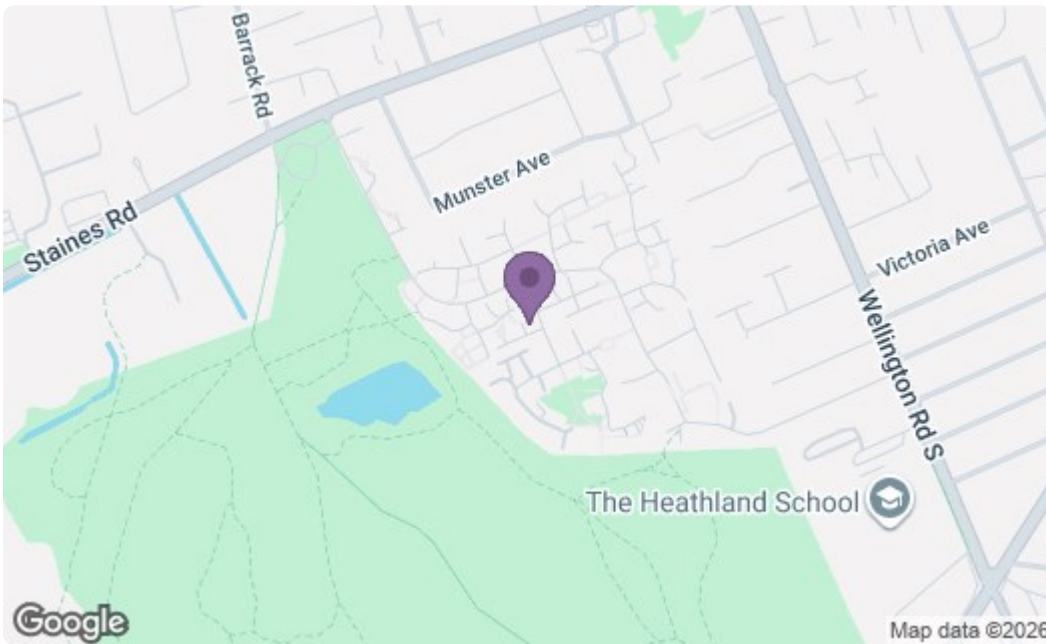
Viewings highly recommended, no onward chain.



A partner of  
**The Guild Of Professional Estate Agents**  
with a network of over 700 independent estate agents

Associated Office: 121 Park Lane, Mayfair, London W1K 7AG t 020 7318 7075







Energy Efficiency Rating		Current	Potential
Very energy efficient - lower running costs			
(92 plus) <b>A</b>			
(81-91) <b>B</b>			
(69-80) <b>C</b>			
(55-68) <b>D</b>			
(39-54) <b>E</b>			
(21-38) <b>F</b>			
(1-20) <b>G</b>			
Not energy efficient - higher running costs			
<b>England &amp; Wales</b>		EU Directive 2002/91/EC 	
Environmental Impact (CO <sub>2</sub> ) Rating		Current	Potential
Very environmentally friendly - lower CO <sub>2</sub> emissions			
(92 plus) <b>A</b>			
(81-91) <b>B</b>			
(69-80) <b>C</b>			
(55-68) <b>D</b>			
(39-54) <b>E</b>			
(21-38) <b>F</b>			
(1-20) <b>G</b>			
Not environmentally friendly - higher CO <sub>2</sub> emissions			
<b>England &amp; Wales</b>		EU Directive 2002/91/EC 	

A partner of  
**The Guild Of Professional Estate Agents**  
 with a network of over 700 independent estate agents

Associated Office: 121 Park Lane, Mayfair, London W1K 7AG t 020 7318 7075